

A spectacular  
ceramics exhibition  
from the Central West  
is on show in Sydney  
until 21 April



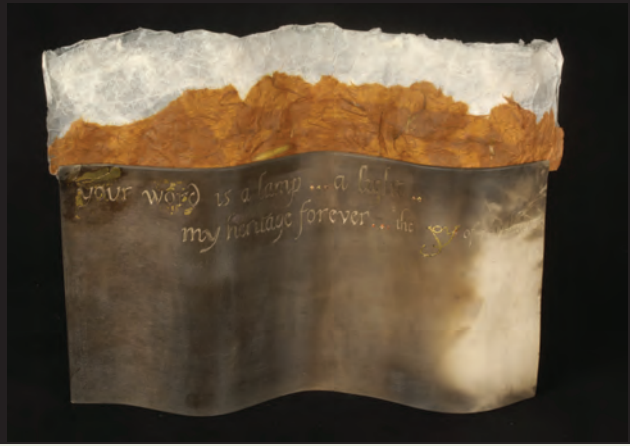
# earthly encounters



Pauline Welfare,  
Seeds 2005, porcelain,  
stoneware banding



Greg Daly, Morphed forms  
2005, wheel thrown forms  
fired to 1300 degrees



Marjo Roberts, Clay pages 2004, laminated  
paper, stoneware, applied gold leaf

Featuring some of Australia's most well known artists and craftspeople alongside less known ceramicists from Bathurst, Mudgee, Lithgow, Orange, Blayney, Cowra and beyond, *Earthly Encounters* is collection of ceramics put together by Arts OutWest to showcase work that best characterises the 'studio tradition' which is the hallmark of the region.

With forms, clays and glazes that reflect characteristics of the local landscape, the works are vibrant, diverse in styles and exceptional in quality.

It's first time that a collection of fine Central West ceramic works has even been put together. The exhibition came about after a long process of negotiation, beginning with a professional development held with ceramicists at Ceramics Focus in 2002.

*Earthly Encounters* premiered at the Orange Regional Gallery in 2005 before touring to the Bathurst Regional Art Gallery last year. The exhibition is at the Mosman Regional Gallery until 21 April and Bega Regional Gallery from 4 May — 2 June. ■

**Earthly Encounters is a Stories of the Central West project, made possible by the Australian Government's Regional Arts Fund.**

**The Regional Arts Fund is an Australian Government initiative to support the arts in regional, remote and isolated Australia.**




## July

26 – 29 July

 Lightning Ridge Opal Festival Entertainment celebrating the opal's tenth year as Australia's National Gemstone, **LIGHTNING RIDGE** Bowling Club  
Tel 02 6829 4488

26 – 28 July

 *Not Like Beckett* A dark and comical one-man show; a love story and a tragedy.  
\$15 - \$35 presented by NORPA at the Star Court Theatre, **LISMORE** Tel 02 6622 0300  
Website [www.norpa.org.au](http://www.norpa.org.au)

28 July

 *Weary Dunlop* The first theatrical work based the true Australian icon.  
\$21 - \$39 APAC, **ALBURY**  
Tel 02 6051 3051

31 July – 4 August

 *Macbeth* One of Shakespeare's most compelling works, produced by Bell Shakespeare. \$45/\$36 IPAC,  
**WOLLONGONG** Tel 02 4226 3366  
Website [www.ipac.org.au](http://www.ipac.org.au)